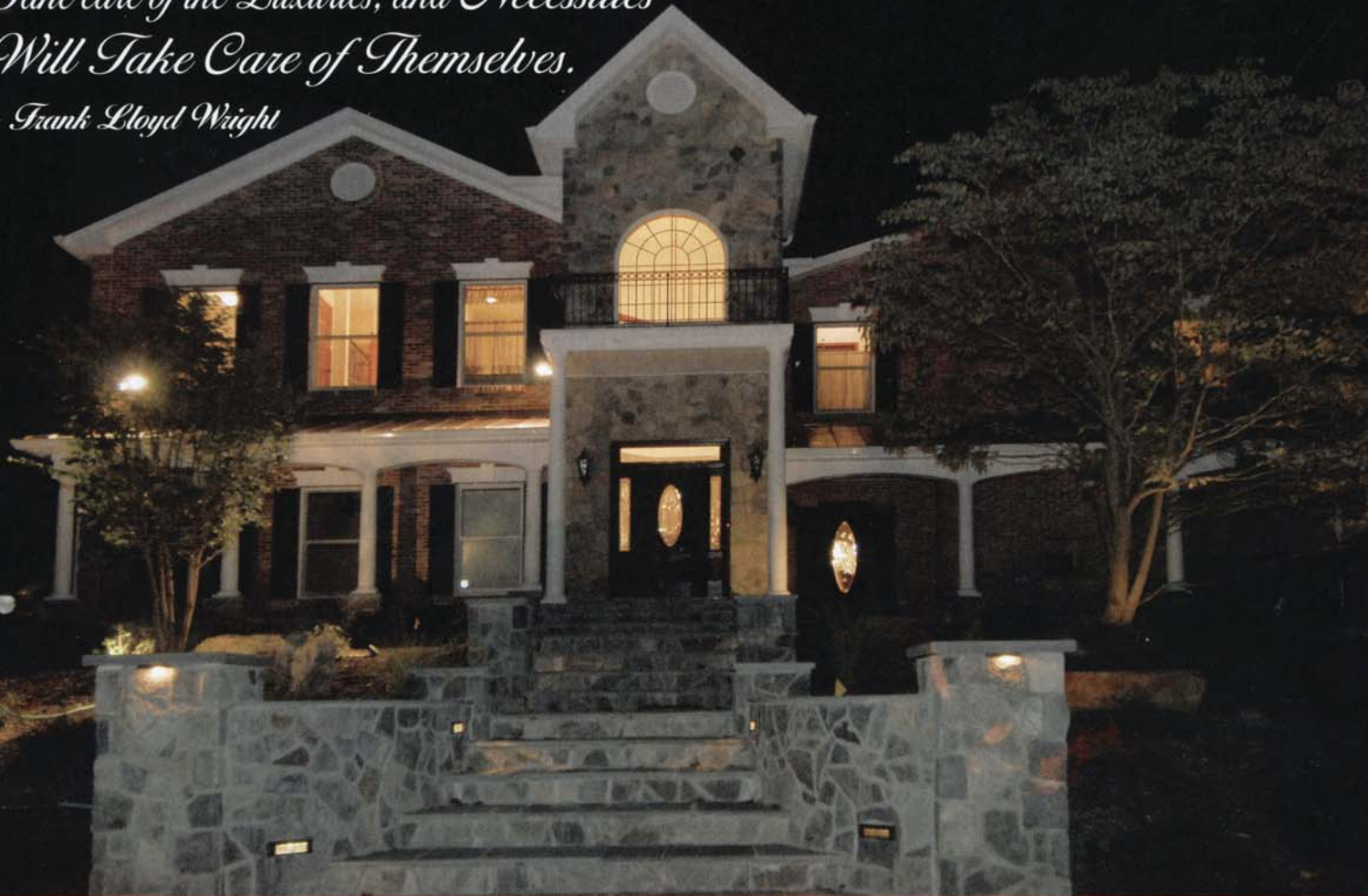


*Take care of the Luxuries, and Necessities
Will Take Care of Themselves.*

- Frank Lloyd Wright



**ADDITIONS • EXTENSIONS • KITCHENS • BATHS
BASEMENTS • CUSTOM GARAGE & SCREENED PORCHES • CUSTOM WINE CELLARS**



Michael Nash

Design  Build & homes

The Ultimate in Luxury

703-641-9800

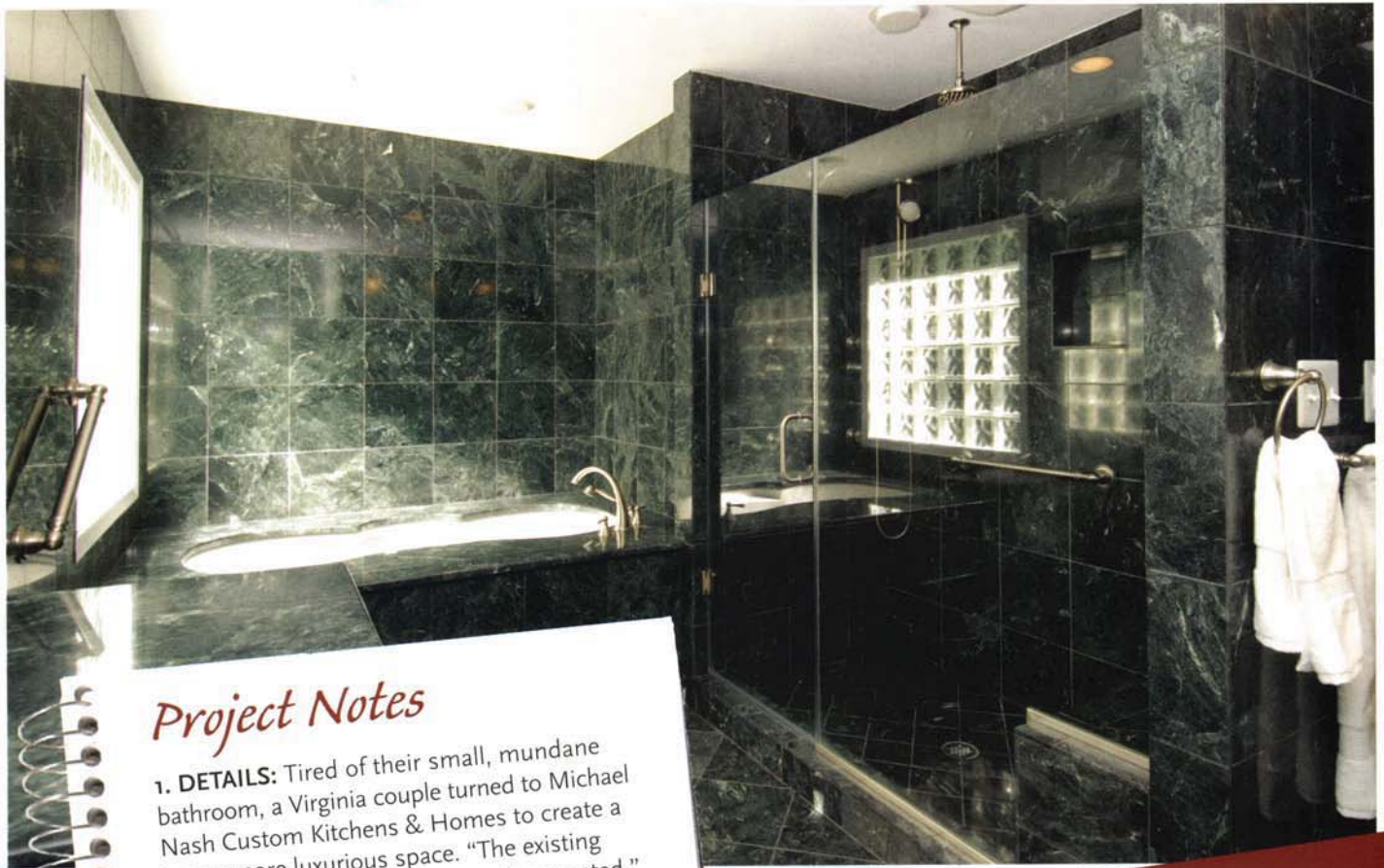
8630-A Lee Highway Fairfax, VA 22031

www.michaelnashkitchens.com

A Division of Michael Nash Custom Kitchens and Homes, Inc.

Serving Northern Virginia Only

Drawing Board



Project Notes

1. DETAILS: Tired of their small, mundane bathroom, a Virginia couple turned to Michael Nash Custom Kitchens & Homes to create a larger, more luxurious space. "The existing bathroom did not have the area they wanted," says company CEO and president Sonny Nazemian. "They also wanted a very large shower and they wanted the tub to be raised for a dramatic effect."

2. CHALLENGES: Space was very limited. Nazemian increased the area by tearing down a wall to incorporate what was a hall closet into the bathroom. The reconfigured plan created enough space for a shower for two, a streamlined, kidney-shaped Kohler tub and a separate commode area. Enlarged windows bathe the room in natural light.

3. MATERIALS: The designer tiled the entire bathroom and shower in Empress Green marble; countertops and a custom tub surround were cut from matching marble slabs. The shower features both a rain shower and hand-held spray. Glass blocks on the windows and in the commode area provide privacy while letting in plenty of light.



DESIGN AND CONSTRUCTION: Sonny Nazemian, Michael Nash Custom Kitchens & Homes, Fairfax, Virginia. PHOTOGRAPHY: June Stanich.

*Take care of the Luxuries, and Necessities
Will Take Care of Themselves.
- Frank Lloyd Wright*



ADDITIONS • EXTENSIONS • KITCHENS • BATHS

BASEMENTS • CUSTOM GARAGE & SCREENED PORCHES • CUSTOM WINE CELLARS



Michael Nash

Custom Kitchens & homes
The Ultimate in Luxury

703-641-9800

8630-A Lee Highway Fairfax, VA 22031
www.michaelnashkitchens.com

Serving Northern Virginia Only